

LumberLine Laser



Visual Alignment Laser Products

Email: sales@lumberlinelaser.com Web: www.lumberlinelaser.com

Call us Toll Free: 855-686-3077 Fax: 360-686-3033

LumberLine Laser



P.O. BOX 821087

12119 NE 99th St.

Suite 2040

Vancouver, WA 98682

855-686-3077

sales@lumberlinelaser.com

LASERS

We offer several power levels in **two** power input configurations, allowing simple connections from line level AC input to Low Voltage AC/DC, making it easier than ever to find a unit for use with your systems.



General:

- Manufactured in the USA
- Solid State Laser
- 24 month warranty
- Repairable

Dimensions:

Length: 2.75-4in

Diameter: 1.25in

Power Level Chart	
Power Levels	Line Lengths
05mW	0-6 ft (0-2 meters)
10mW	0-15 ft (0-5 meters)
15mW	0-18 ft (0-6 meters)
30mW	0-24 ft (0-7.5 meters)
50mW	30+ ft (0-10+ meters)
*All lengths given assuming average ambient light	

Red Lasers

Available in 05, 10, 15 & 30mW power outputs.

Green Lasers

Available in 05, 10, 30 & 50mW power outputs.

ADAPTERS

SA-300

50mm laser bracket adapter is used when mounting into a preexisting machine bracket that has a 50mm ID bore. It is a compression, split style bushing and will work with any of our laser units.



SA-110 & SA-111

The SA-110 bracket is used when mounting onto a 20mm shaft common on bridge saws and many foreign machines.

The SA-111 bracket mounts onto 3/4" shaft.



SA-072

This bracket is a flexible universal base for straight line rip saws. It elevates the laser unit up off of the machine, allowing the laser to be adjusted for line length and keeps it more out of harm's way.

- Height 18"
- Mounting: 2- 5/16" holes spaced 3" apart



*shown with SA-008 stationary bracket, NOT INCLUDED

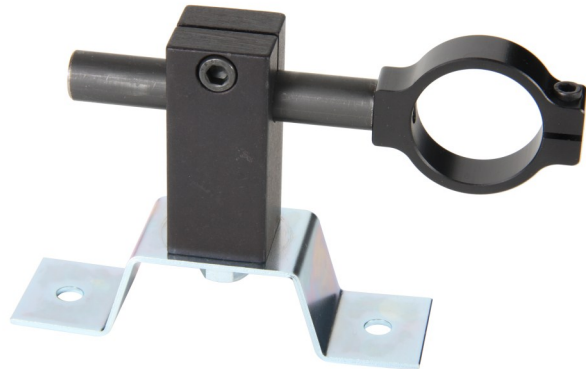
STATIONARY BRACKETS

SA-008

Use for any mounting application that is fixed.

Mounting options:

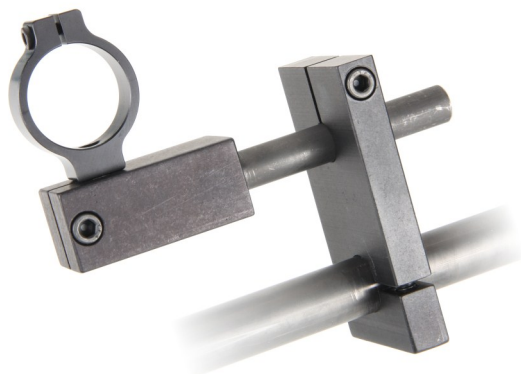
- 2ea 1/4" bolts at 3-1/4" spacing
- 1ea 5/16" bolt (omitting the formed base)



SA-009

Useful in applications that require multiple fixed lasers at a single location such as bull edgers

- Designed to clamp to a 3/4" shaft
- Use as a stationary saw bracket on our shift assemblies



L-XX-LV

The L-05-LV features a built-in low voltage power converter, accepting a wide range of power inputs for machine voltage or portable applications. This uses a standard M12 (A-Coding) 4 pin connector power cable

Power In-puts: 4.5-36 VDC
9-25 VAC

Cord Length: 2, 5, 10 meters

Weight: 2.3 oz

Environment: NEMA 6 / IP67



L-XX-R

This unit features a remote power supply. It features a switch mode power supply that can run on 120-240 vac main lines.

Power Supply: (PT# SA-115)
100-240 vac
50-60 hz
300ma

Cord Length: 9ft-10"

Weight: 2.3 oz



To order:

Replace the X's in the model number following the series prefix with the power level and configuration that you require.

E.g., L-05-R

(For green, add -GRN)

L	-	XX	-	X
Series Prefix		Power Level		Configuration

EDGERS

Our shifting assemblies for board edgers set the industry standard for durability, and ease of use.

- The assemblies come with all of the routing pulleys, and cable that you will typically need to install them.
- The anodized aluminum trolleys slide on a rust resistant chrome steel shaft, using replaceable Delrin bearings.
- Units come standard with 48" shafts, but can be ordered in lengths up to 72"

*To add a stationary saw, order the SA-009 stationary "Shift" bracket



SA-009

SA-001

UNISON STYLE



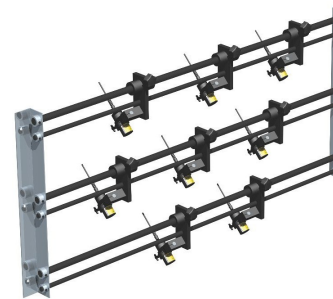
SA-002

INDEPENDENT STYLE



GANG RIP SAWS

Below are the components of our gang rip saw racks. Simply order the three rail assembly, and purchase a trolley for each laser line that you need! If you have any questions, give us a call!



- Spacing down to less than 3/4" utilizing all three shafts
- User Replaceable bearings
- Easy thumb screw adjustment
- Order only what you need, and add on later!

COMPONENTS:

SA-011

Handset Trolley

- Delrin Bearings with snap rings for easy replacement
- Easy, accurate, adjustment
- Repeatable accuracy



SA-003

3 rail shaft set with end brackets

- Standard length is 48", but can be ordered up to 72"
- Rust resistant chrome steel shafting

